

V-Slim Dotless (12W/meter type)

Super-slim profile of just W7.9 mm x H11.9 mm with built-in plug-in connector that allows head-to-head fixture-to-fixture connection.

Suitable for cabinet, niche lighting or other furniture applications.

DC24V

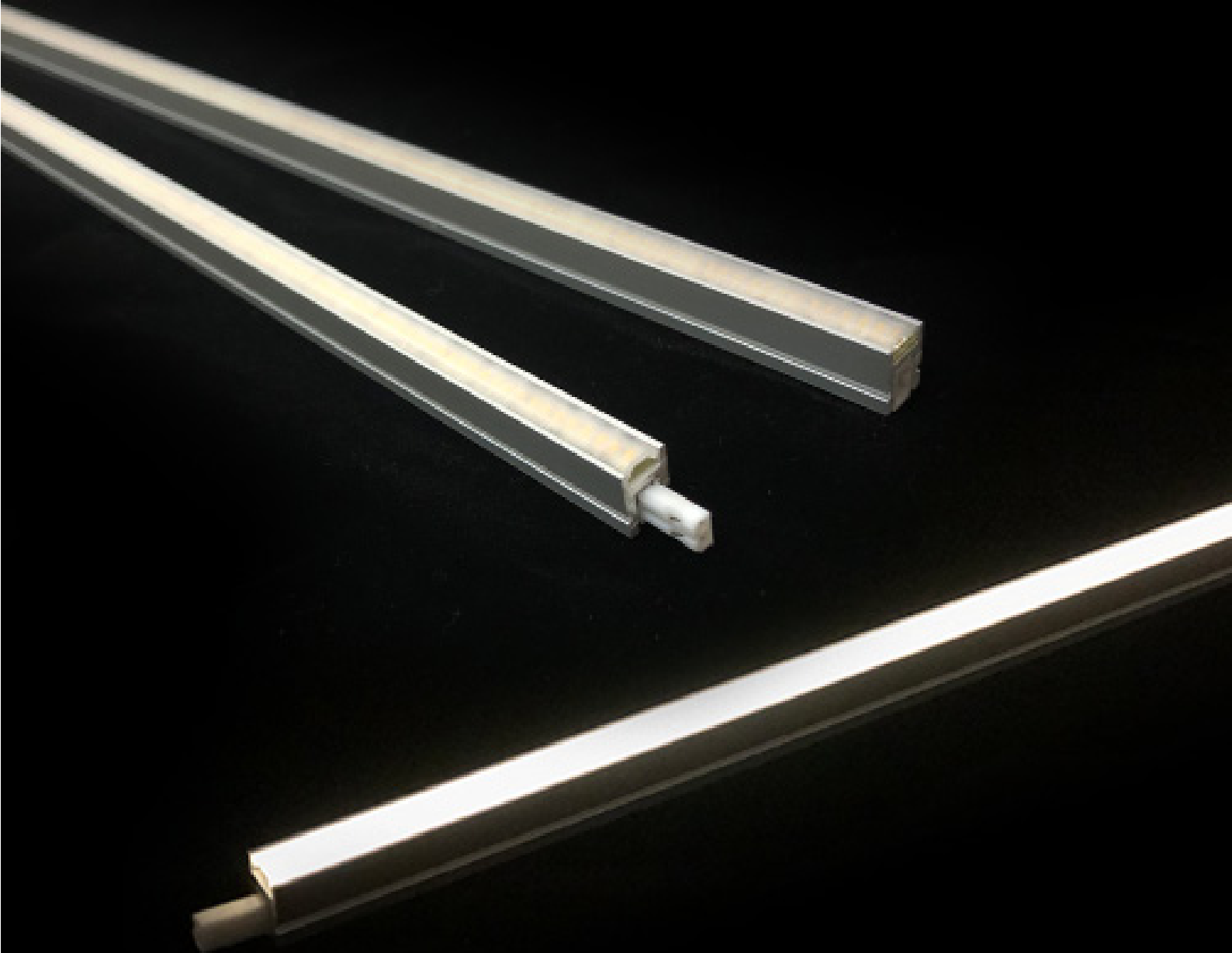
12.0W/m

Indoor

Ra90 min.

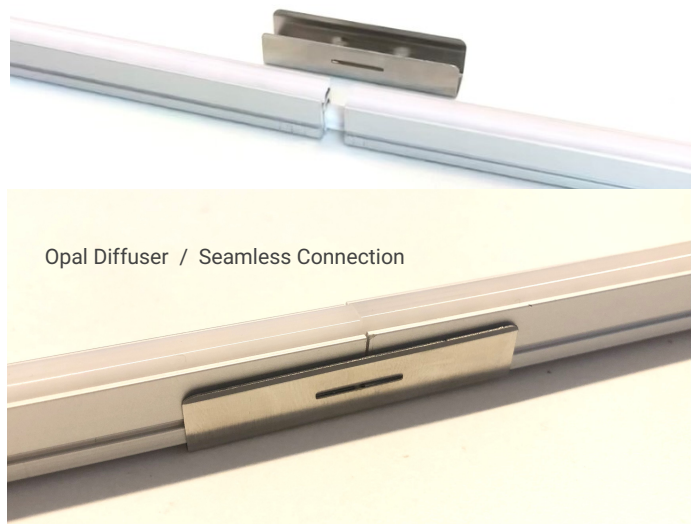
Dimmable
(DMX, DALI,
0-10V)

3.8W/m available

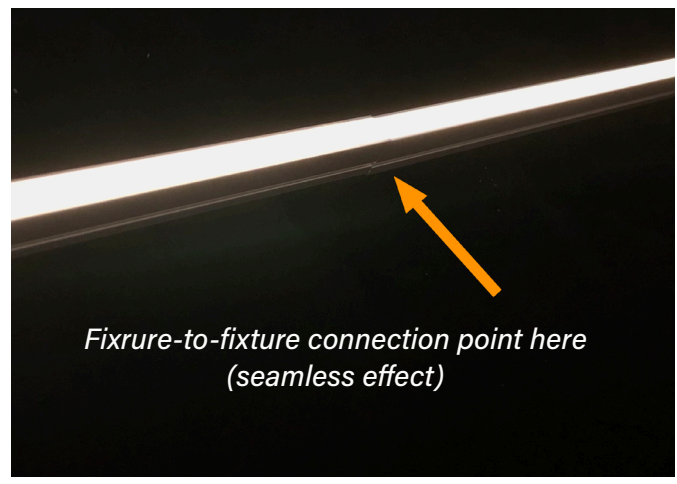
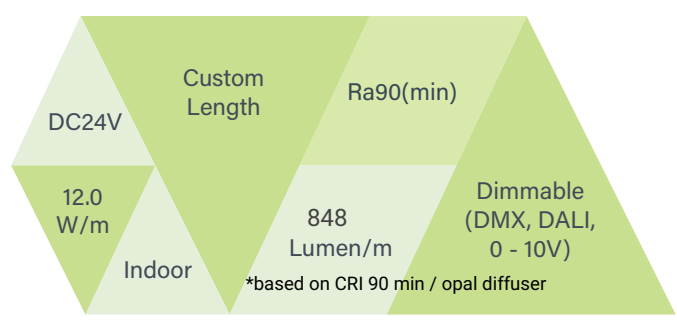


FEATURES

- Ultra-slim profile W7.9 mm x H11.9mm.
- Built-in connector that allows head-to-head seamless connection.
- Available in CCT 2700K, 3000K and 4000K.
- Reliable/High-efficiency NICHIA LED chip with reverse-polarity protection circuit.
- Minimized voltage drop due to wires running through the whole housing.



BASIC SPECIFICATION



PRODUCT SPECIFICATIONS

Product Name	V-Slim				
Model No.	VSD0331-XXXX	VSD0661-XXXX	VSD0817-XXXX	VSD0991-XXXX	VSD1147-XXXX
Input Voltage	24Vdc	24Vdc	24Vdc	24Vdc	24Vdc
Power Consumption	4 W	8 W	10 W	12 W	14 W
Dimension (mm)	331*7.9*12(H)	661*7.9*12(H)	817*7.9*12(H)	991*7.9*12(H)	1147*7.9*12(H)
Weight	63 grams	125 grams	119 grams	179 grams	208 grams
Casing Body	Aluminium Heatsink with UV-resistant Polycarbonate Semi-Frosted Diffuser				
LED Beam Angle	110°	110°	110°	110°	110°
Operating Temperature	-10°C~50°C	-10°C~50°C	-10°C~50°C	-10°C~50°C	-10°C~50°C
Max. Length of Series Connection	4 meter	4 meter	4 meter	4 meter	4 meter
Option Parts	Metal Mounting Bracket 0° (Flat) Type				
No of LEDs	133	266	329	399	462
Power Supply Unit (Gear-Driver)	Constant-Voltage Switching Power Supply (TDK Lambda, Sold Separately)				
Lumens (typical @ CCT 3000K)	280lm	560lm	693lm	841lm	973lm

MODEL NO

Model No

VSDXXXX – XXXX – H

Fixture Type & Fixture Length

Color Temperature

LED Color Rendering

Fixture Type & Fixture Length

VSD1147 → V-Slim Dotless L1147mm

VSD0991 → V-Slim Dotless L991mm

VSD0817 → V-Slim Dotless L817mm

VSD0661 → V-Slim Dotless L661mm

VSD0331 → V-Slim Dotless L331mm

** Above stated fixture length does not include connectors.*

Other custom-length: L870mm / L557mm / L245mm

Color Temperature

40XX → LED Color 4000K

35XX → LED Color 3500K, Build-to-order

30XX → LED Color 3000K

27XX → LED Color 2700K

** The last two code "XX" stands for color binning code (by NICHIA Japan's LED binning) as per MacAdam Step 3 basis*

LED Color Rendering

H → CRI Ra Minimum 90 type

Example

VSD0331 – 27XX

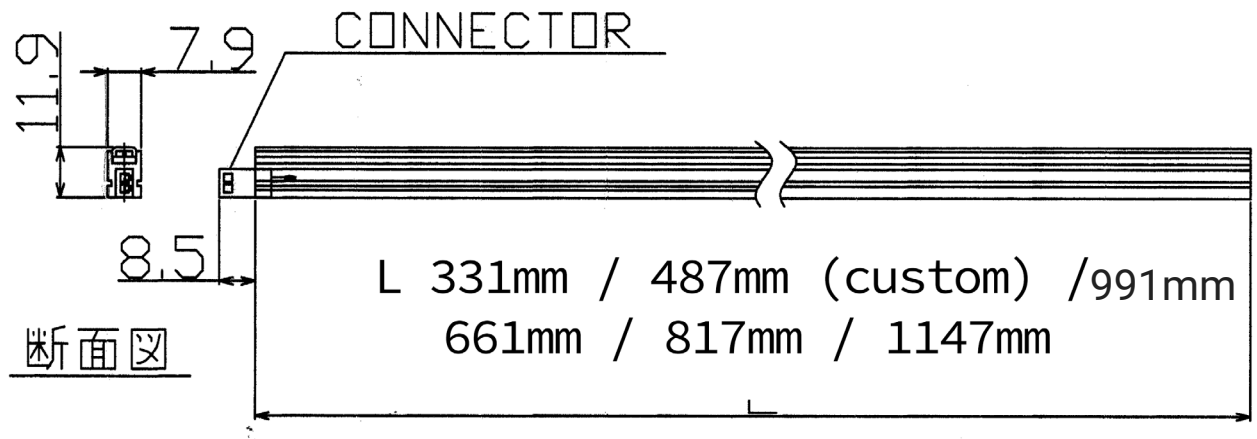
Fixture Type & Fixture Length

Color Temperature

V-Slim Dotless L331mm

LED Color 2700K

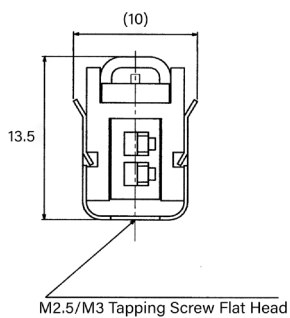
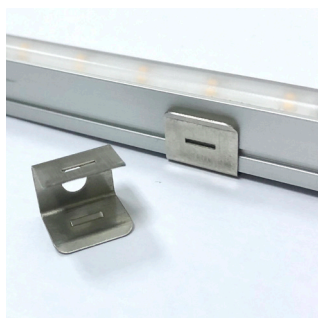
MECHANICAL DRAWING



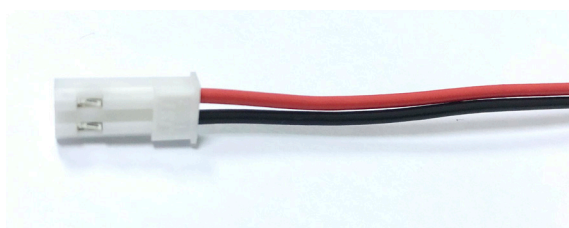
Other custom-length: 870mm / L557mm / L245mm

OPTIONAL ACCESSORIES

- 1. Mounting Clip Bracket 0° Flat Type
Model: MMC-VS-0DEG



- 2. Male Harness Connector with L500mm Cable
* Required for first LED Fixture leading to PSU driver

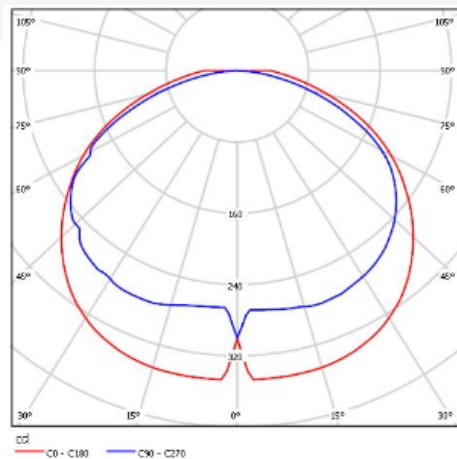


- 3. Magnet (Fixture Built-in)



PHOTOMETRICS

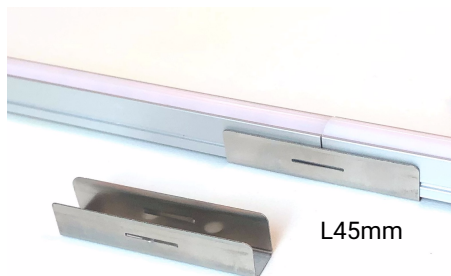
BROWNIE Lab 190214



Model VSD0991-30XX-H (L991mm) CRI Ra90 min: Flux 841Lm
* Opal diffuser type

- 4. Fixture-to-fixture Bracket

Model: MMC-VS-L45



- + Use M2.5/M3 flat head tapping screw (x 2points)
- + The same profile dimension as metal mounting clip 0deg